



simoco™

**REVOLUTIONISE YOUR  
MISSION CRITICAL NETWORK**

 velocity



## VELOCITY IS THE NEXT GENERATION OF SMART SOLUTIONS THAT PROVIDES RELIABLE MISSION CRITICAL APPLICATIONS IN THE PUBLIC SAFETY, TRANSPORTATION, UTILITIES AND GOVERNMENT SECTORS.

In a fast moving critical communications market with a plethora of technologies available, organisations are constantly challenged on bridging the gap between narrowband networks and broadband cellular networks without the need to abandon legacy communication equipment and services, which are heavily relied upon for delivering mission critical voice.

This is why Simoco designed Velocity, allowing a unification of communication networks with access to LMR and high speed Long Term Evolution (LTE), as well as multiple bearers such as Wi-Fi and Bluetooth either onto a single converged platform or stand alone. It combines mission critical voice using LMR or broadband LTE for rich applications such as scheduling, productivity, navigation applications and supports the health and safety welfare requirements of your people.





## KEY FEATURES

We understand that mission critical voice is crucial to your communication network in ensuring worker safety and improved productivity. Velocity puts mission critical voice at the heart of your network either through traditional networks such as LMR or over LTE by seamlessly roaming to the best available bearer.

Velocity supports a range of devices including professional radios, tablets and smartphones. It extends your traditional mission critical voice network into a converged communications platform with access to high speed broadband data and Wi-Fi connectivity. The addition of SCADA and Telemetry, Telematics and advanced data applications powered by high speed Internet connectivity empowers your organisation to thrive in a connected economy, reduces complexity and turns insightful data into intelligence.



### HIGH SPEED INTERNET CONNECTIVITY



### PUSH-TO-TALK TECHNOLOGY



### OPERATES ON TABLETS AND SMARTPHONES



### VELOCITY REMOTE MANAGER



### EXTENDED FEATURES



## HIGH SPEED INTERNET CONNECTIVITY

Velocity brings high performance LTE inside, and up to 100m outside your vehicle which allows always on connectivity to mission critical users.

Third party systems can be accessed to perform a number of broadband enabled tasks such as video streaming or satellite technology using Wi-Fi connectivity to the Velocity gateway helping to achieve intranet, VPN or Internet access. Velocity is designed to serve as a Wi-Fi hotspot allowing mission critical users' to connect within Wi-Fi range.





## PUSH-TO-TALK TECHNOLOGY

In both routine and extreme situations, organisations require reliable mission critical communications in order to do their jobs, to keep citizens and communities safe. From communications during an emergency to essential field operations management for transportation systems, utilities, farming or venues, reliable connectivity for voice, even in remote or harsh environments, can be the difference between mission success and failure – sometimes, between life and death.

This means that calls need to connect instantly and communications cannot fail when lives are at stake and every second counts. Velocity has been designed to ensure it won't. By using highly reliable enterprise Push to talk over cellular (PoC) services over LTE , Velocity has the intelligence to seamlessly pick the best transmission signal carrier to deliver crisp voice making the automatic roaming between LMR and LTE truly seamless and virtually unnoticed by the user. Voice conversations will sound clearer and more natural.

Velocity is interoperable with your existing LMR network and the convergence of LMR and LTE allows your organisation to maximise its current investment well into the future. It provides a platform that harnesses mission critical voice and high speed broadband data which drives productivity, worker safety and efficiency.





## OPERATES ON TABLETS AND SMARTPHONES

As consumers, we have all grown used to tablets and smartphones in our day to day lives. The same is reminiscent in a number of industries where utilisation of these devices delivers operational efficiencies. They take advantage of high speed mobile broadband and can run applications that are specifically designed to improve productivity.

Velocity has been designed to operate as an application managing all connected technologies on a standard tablet or smartphone. The application controls LMR and LTE voice and data operations seamlessly. The addition of broadband LTE connectivity allows access to third party applications such as video calling, emails, work scheduling, VPN, remote workforce management software, navigation applications and more.

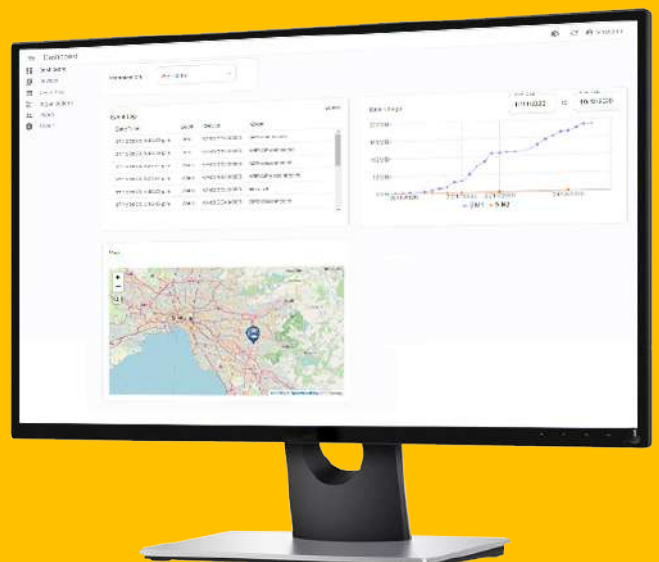




## VELOCITY REMOTE MANAGER

Velocity Remote Manager (VRM) is an end to end management solution to support the centralised management of remote devices using 4G LTE and/or Wi-Fi. Other features include:

- Remote monitoring and diagnostic from system logs
- Mass radio configuration and firmware updates
- Connection history for each device
- HTTPS connection to VRM web server
- Secure transmission between VRM sever and end devices via (MQTT TLS protocol)
- Support for all modern browsers
- A subscription offers software updates to the EC-800 product range





## EXTENDED FEATURES



Velocity consolidates all your devices and peripherals into a single IoT solution connecting your industrial assets to the cloud.



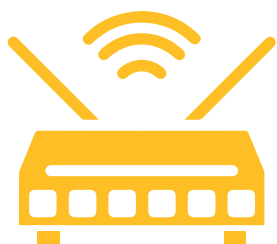
Velocity has the adaptability of converging your LMR network and broadband LTE into one device which supports a migration path to LTE and secures your investment for the future.



Velocity operates your mission critical communication network through a tablet or smartphone.







## PRODUCT RANGE

Affordable and best in class intelligent communications.

Feature	EC-810	EC-830
High Speed Internet Connectivity	✓	✓
DMR over LTE		✓
Operates on Tablet or Smartphone		✓
Bluetooth	✓	✓
Customisation using NodeRED	✓	✓
Velocity Remote Manager*	✓	✓

\* Subject to subscription



## SUPPORT PACKAGES

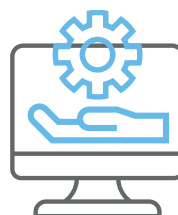
Our support packages make it easy to buy, deploy, manage, and evolve your IoT device over flexible 1, 3 or 5 year terms.

### EXTENDED HARDWARE WARRANTY



At Simoco we understand how important and critical network uptime is to your organisation. To protect your investment we have a range of extended hardware warranty options available.

### SOFTWARE SUPPORT AND FEATURE ENHANCEMENTS



Organisations will benefit from additional functionality and new feature enhancements further maximising the benefits of the Velocity device.

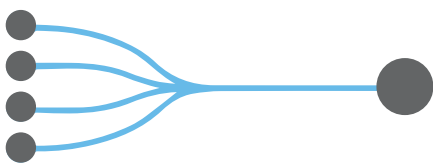
### VRM CLIENT ACCESS AND SUPPORT



Using Velocity Remote Manager (VRM) will provide your organisation a way to configure and manage devices securely. Customers taking a VRM subscription will also be provided a level of support in using the tool.



# WHAT DOES VELOCITY DO FOR YOU?



## COMBINES YOUR TECHNOLOGIES INTO A SINGLE PLATFORM

Velocity is a revolutionary device that truly offers a converged platform for mission critical voice and broadband data services. Offering a truly unified communication experience, Velocity is designed to handle any critical situation improving co-operation and seamless communication.

It provides organisations the resilience, always on availability and quality that is expected in a mission critical business tool.



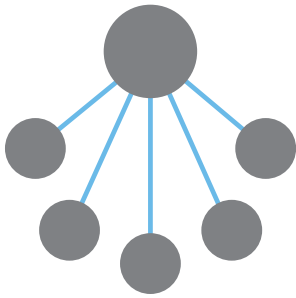
## UNIFIES YOUR MISSION CRITICAL COMMUNICATIONS

Increased complexity in your communication technologies adds extra demand on your mission critical communication systems. Keep your people connected with extended range in your vehicles through unifying communications regardless of communication technology and bearer.

Velocity provides users seamless transition between LMR and LTE networks. by intelligently picking the best bearer dependent on signal and is able to effortlessly switch between LMR or LTE to provide quality uninterrupted communications.



**INVESTMENT IN VELOCITY WILL FUTURE PROOF YOUR ORGANISATION AND REPRESENT A WIRELESS REVOLUTION DEFINED BY THE ABILITY TO PROVIDE 24X7 CONNECTIVITY FOR PEOPLE, PLACES, AND THINGS EVERYWHERE.**



## **CONVERGENCE OF DEVICES**

Velocity has adapted its technology with the rise of the digital age and no longer do users have to control the workings of a mobile radio with a fist mic. This is made possible by controlling all elements of the radio through either a tablet device or smartphone. It also allows you to extend your mobile radio through the choice of Simoco product or third party peripherals such as credit card readers, printers, generators and so forth as well as utilisation of device ports.



## **INVESTING IN THE FUTURE WITH A PARTNER YOU CAN TRUST**

Simoco has been installing mission critical systems spanning 80 years - providing solutions that support the transmission of voice and data smartly and securely, 24 hours a day, 365 days a year. We are a long term partner you can trust in managing your communication network.

Today's investments must ensure that technology is future-proof, ready for the coming demands, however and whenever they arrive. By investing in Velocity, organisations can minimise their future CAPEX, boost productivity and profitability as well as maximising operational efficiencies.





# simoco™

This brochure is subject to frequent changes and updates without prior notice. For the most up to date version, please check our website or contact Simoco directly. Any included specifications based on standard operating conditions. Simoco does not accept liability for any error or omission in this document.

© Simoco, Velocity