

The Simoco Xd Dispatch is a user friendly trunked radio Dispatch solution with the option of fully integrated location services. It supports all DMR Voice Call types, as well as short data messages, and status updates. Furthermore, it allows you to make voice calls and send status and short data messages directly from the integrated map.

Ease of Access

Simoco Xd Dispatcher allows you to monitor audio on several talk groups simultaneously while conversing on the 'selected' group resource.

The dispatcher also features configurable group call buttons with the ability to dynamically change priority or broadcast to the group.

Multiple audio devices (headsets, speakers, etc) are user configurable. Speed dial buttons can be configured for individual calls, status, and short data messages.

Cost Effective

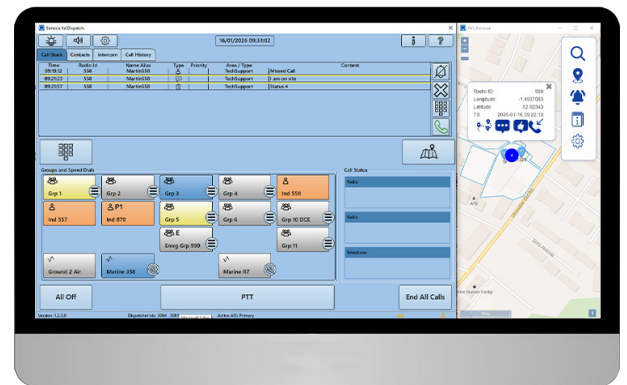
The intuitive interface makes the dispatcher simple to deploy and configure, and is very cost effective due to the low cost hardware requirements. The dispatcher requires no additional servers other than a PC and the standard Simoco Xd AIS Gateway.

Advanced Location Services

The fully integrated AVL solution has the ability to call and send data messages directly to a specific radio on the map.

It also has a number of safety and security features, including visible and audible man mown and lone worker alarms, geofence violation alerts, and the ability to search for and follow a specific radio unit, with the map panning to follow the unit, keeping it in sight.

Time and date filtered GPS trails also enhance the ability to analyse location data which gives businesses a simple and effective enhancement to their incident management procedures.



Key features

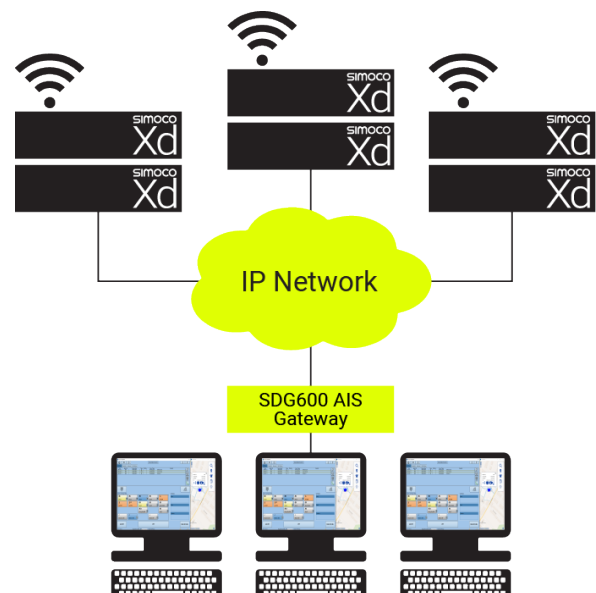
- Fully integrated with Simoco Xd trunked radio systems
- Monitor multiple simultaneous group calls while talking on selected group call or individual call
- Clear user feedback, including PTT grant indication and identity of talking party (even when group is not monitored or selected)
- All DMR call types including broadcast and all unit calls
- Emergency calls and 3 levels of priority
- Short data (up to 52 chars) and status messages
- Configurable group call buttons with ability to dynamically change priority and broadcast when making each call
- Configurable speed dial buttons for individual calls, SDM's and status messages
- Dial pad
- Call stack with call back functionality and ability to retain any call to call-back later
- Configurable audio output (speaker/headset) for received audio and ring tones

The fully integrated AVL solution has the following key features

- Display map showing location of DMR Radios
- Call and send short data messages directly from the radio icon on the map
- Man down and lone worker alarms with visual and audible indications
- Geofence configuration and violation alerts
- Search for and follow a radio unit (map pans as radio moves)
- Time and date filtered GPS trails

Network architecture

Simoco Xd Dispatch can be configured in either single or multi-seat configurations, both of which interface to the Tier III DMR Xd infrastructure via the Simoco AIS Gateway.



General Specification

Console PC (Windows 11)	Microsoft Windows 11 Professional HP ProDesk 400 Core i3, 4GB RAM, 500GB HDD, Ethernet
Touchscreen	Dispatch only: iiyama Prolite 15", Aspect ratio 6:4 Dispatch/AVL: ELO Touch Solution 2002L 19.5" , Aspect ratio 16:9 Viewsonic TD2220 widescreen, aspect ratio 16:9
Headset (USB)	Plantronics Blackwire 3215 USB-A corded UC headset Note: To avoid disconnecting USB to change headsets, a corded headset with 3.5mm jack to USB connector is recommended
Footswitch (USB)	Herga 6289 general purpose footswitch
Desktop mic (USB)	Buddy desktop mic 7G
AIS Gateway/ AVL Server PC (Linux - 64bit)	HP 400G4PD i5, 4G RAM, 500GB HDD, Lindy PCI-Express ethernet