

SB2025NT-C Compact P25 Base Station



simoco
wireless solutions

Features

- ▶ Robust, reliable and compact
 - ▶ 100% duty cycle
- ▶ Comprehensive remote management and diagnostic



**P25 CONVENTIONAL
BASE STATIONS**

SB2025NT-C Compact P25 Base Station

The SB2025NT-C Base Station offers market leading dual mode P25 conventional and analogue performance in a robust, reliable yet compact 2U form factor. Designed and built to exceed industry standards, this base station features a digital fixed station interface (DFSI) enabling economic deployment and simple remote management.



Performance & Reliability

The combination of advanced component surface mount technology, rugged machined module casing and optimised PA heatsink, ensures that the SB2025NT-C base station offers outstanding performance and reliability under the harshest conditions.

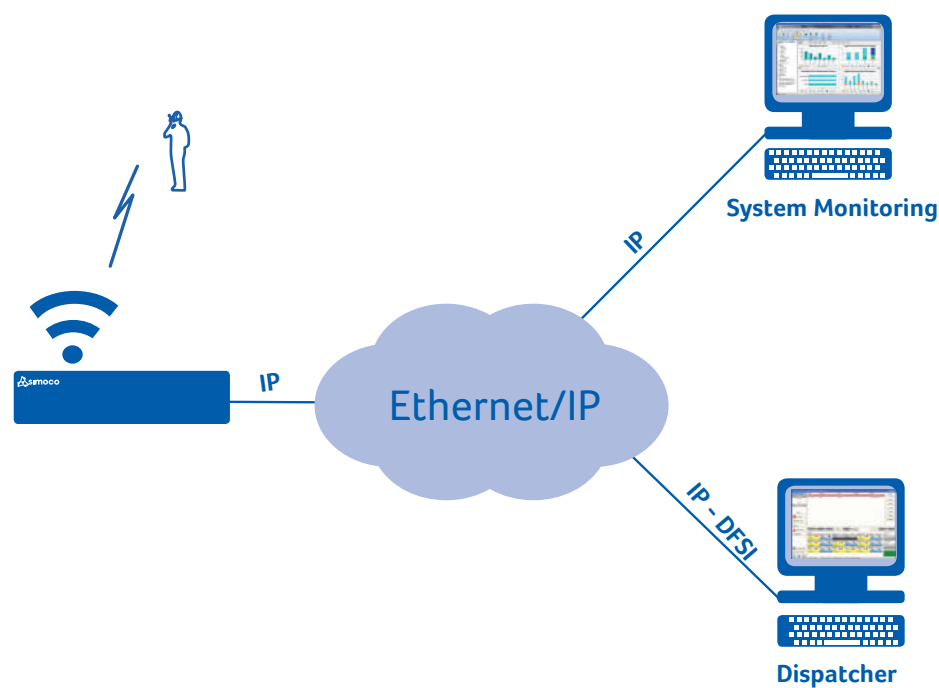
The sensitive receiver features a wide switching bandwidth while maintaining excellent blocking, intermodulation and adjacent channel performance. The transmitter exciter module has very low spurious emission levels, and is followed by an efficient RF power amplifier.

- Wide range of frequency bands available
- Individual channel programmable parameters, including: frequency, power, NAC/TGID, RF mode and channel bandwidth
- Optional feature upgrades available using software keys
- Easy to deploy base station with intuitive set up and simple remote management

Features

- ▶ 100 Watt transmitter
- ▶ DFSI interface allowing choice of P25 standards based applications
- ▶ 2 RU high subrack
- ▶ Remote management and diagnostics
- ▶ 100% duty cycle
- ▶ Dual mode analogue PMR and P25 digital conventional

Example Diagram



Specification

General Specifications

Antenna Connector	Rx, Tx both N type female
Channel Spacing	Analogue - Programmable 25/12.5 kHz. Digital - 12.5 kHz
Channels	255 DFSI selectable
Frequency*	148-174 MHz, 400-435 MHz, 435-470 MHz. Other bands upon request.
Modulation	Analogue - Direct FM two point method. Digital - C4FM
Operating Temperature	-30 °C to +60 °C (-22 °F to 140 °F)
Physical Size	2RU Height x 19" rack mount
Supply Voltage	13.8 VDC +/- 20% or optional AC mains input

Transmitter

Frequency Stability	2.5 PPM VHF 1.5 PPM UHF
Modulation Fidelity	Less than 3%
Power Output	100 W
Symbol Deviation	1.8 kHz

Receiver

Audio Bandwidth	300 Hz to 3000 Hz (+1,-3 dB)
Distortion	Less than 2% @ 60% deviation
Intermodulation Immunity	Better than 82 dB blocking better than 100 dB at +/- 1 MHz point
Sensitivity	Better than -117 dBm for 12 dB SINAD, typ -120 dBm. P25 - Better than -117 dBm for 5% BER

APCO P25

- Front panel status indicators
- DFSI interface option for IP connected dispatch console
- Mixed mode repeat - analogue and digital
- NAC can be unchanged or defined
- Remote diagnostics
- Transparent P25 repeat - passes encrypted voice transparently

Options

- 4-wire analogue dispatch console interface (via central NI)
- SNMP traps

*Note: Specifications based on standard operating conditions. Not all combinations of frequency bands and options are permissible for every market area. See Simoco Wireless Solutions Product Catalogue for a full list of specifications.

All specifications are subject to change without prior notice.
Simoco Wireless Solutions does not accept liability for any error or omission in this document.

Contact Us

UK HQ
Field House
Utttoxeter Old Road
Derby
DE1 1NH
Tel: +44 (0) 1332 375 500
info@simocowireless.com

AUS HQ
1270 Ferntree Gully Rd
Scoresby, VIC 3179
Tel: +61 (0) 3 9730 3999
Fax: +61 (0) 3 9730 3964
inquiry.aus@simocowireless.com

www.simocowirelessolutions.com

simoco
wireless solutions